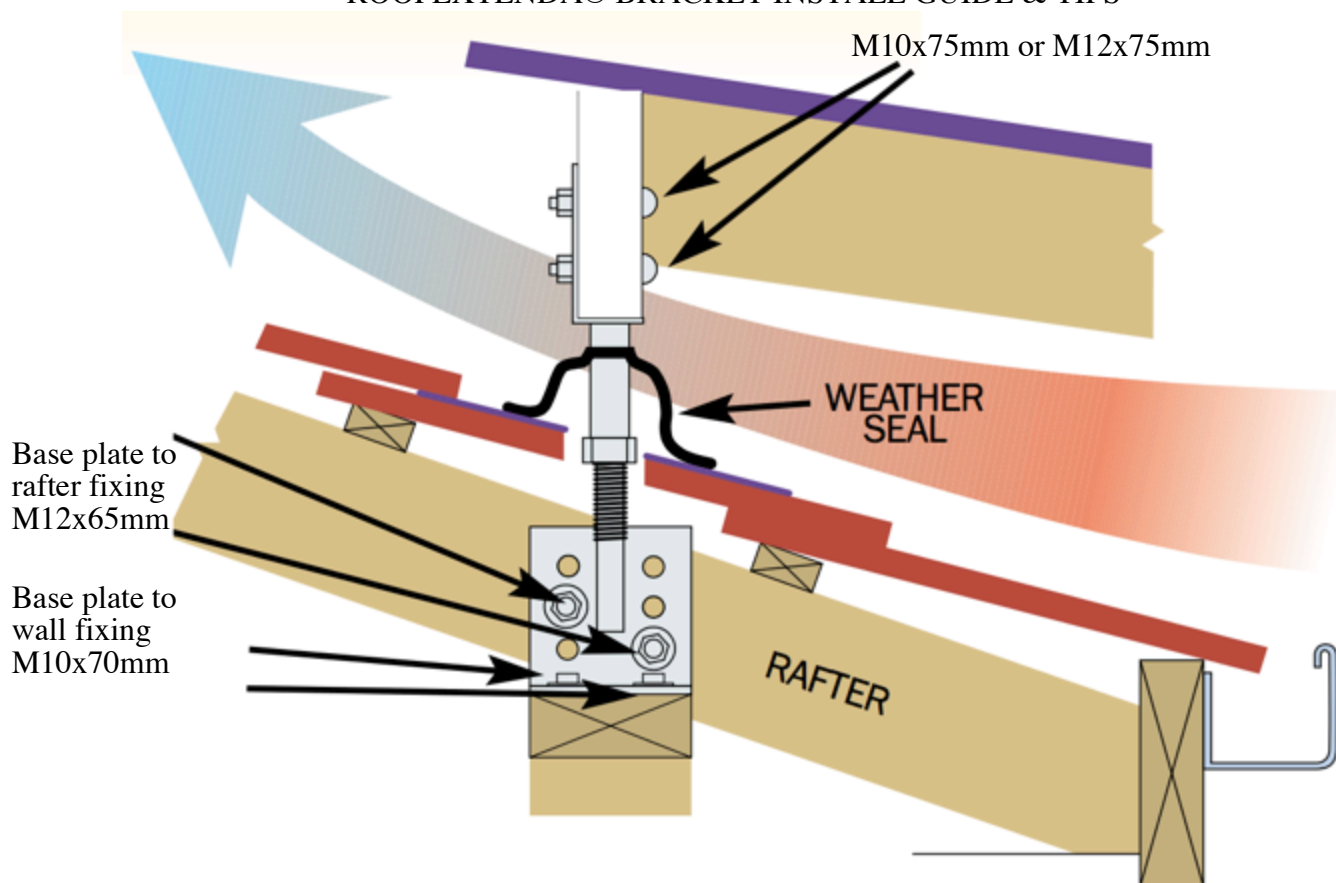


ROOFEXTENDA® BRACKET INSTALL GUIDE & TIPS



PLEASE NOTE EVERY ROOF TRUSS IS DIFFERENT
INSTRUCTIONS ARE AN ASSISTANCE ONLY

- Fill in your computation form & email to ROOFEXTENDA® for engineering.
- Roofextenda® brackets spacing recommendation is between 2000mm to 2500mm.
- Lift a tile or roof sheet and find the rafter spacing & select your nominated rafters.

It is recommended that you work on one Roofextenda® bracket at a time –**HOWEVER** as brackets are adjustable you may need to go back and fine-tune your heights.

(Walls should be straight however it is best to check alignment as your go along)

INSTALLING BASE PLATE

1. Lift selected tile & place to the side carefully to be marked out for rod penetration.
OR Lift roofing sheet and hold back carefully to be marked out and trimmed for rod penetration.
2. Place base plate with threaded rod against rafter & down onto wall.
3. Drill holes using 12mm drill bit.
4. Install angle bracket base plate with the threaded rod on desire side with M12x65mm Bolt/washer and on reverse side single base plate/washer/nut and tighten.
5. Provision has been made to fix the angle section to the existing wall frame to assist in reducing any uplift. Drill holes 6mm drill bit to fix M10x75 -Screw/washer into wall frame.
6. Thread on & adjust height locking hex nut to desired height & retrofit top section making sure top plate is in desire position for beam alignment to next riser. (Take top plate off to install roofing)

IMPORTANT – If you get this height of the LOCK nut correct then apply this height to each riser ;)

REPLACING TILE AND TIN SHEETING

7. Trim your tile or tin roof sheeting to allow only enough room for the ROOEXTENDA® rod to penetrate through roof.

WEATHER FLASHING

8. Trim weather flashing & slide up top bracket rod before installing the top bracket.

TOP SECTION OF ROOEXTENDA® BRACKET

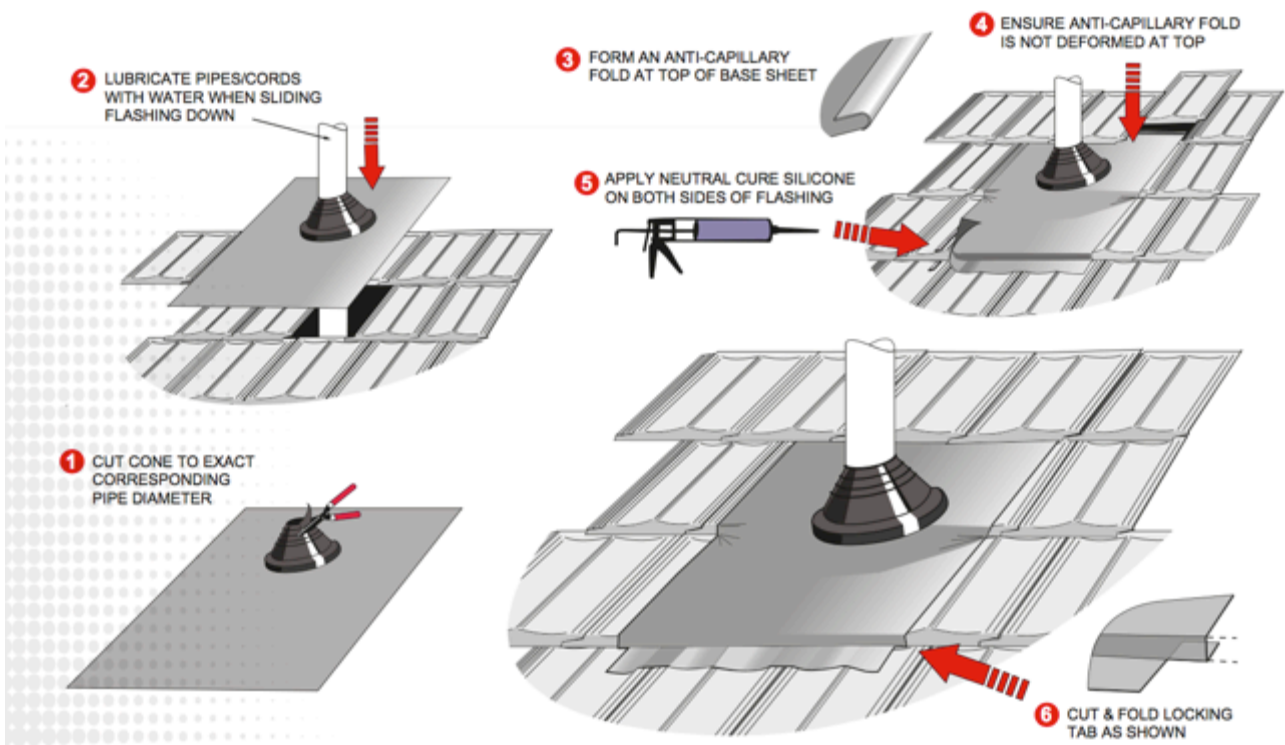
9. Wind female section rod onto thread, down to locking nut.
10. Check again alignment of top bracket and adjust lock nut if necessary.

Once all risers are in place and heights have been checked (flick a line level or laser line) & lock nuts are tight, then weather flashings can be installed.

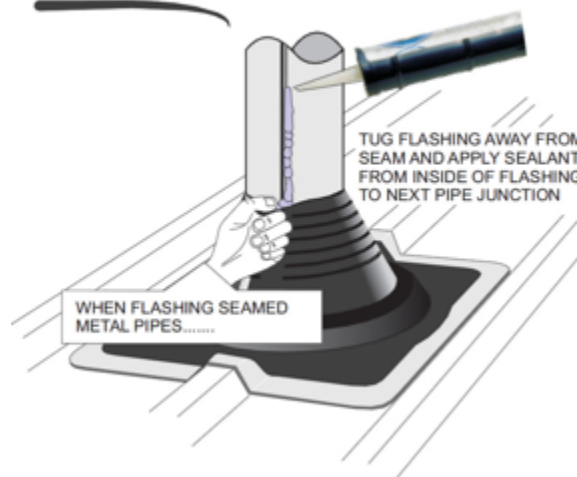
WEATHER FLASHING

Follow weather flashing installation guide & TIPS for tin & tile

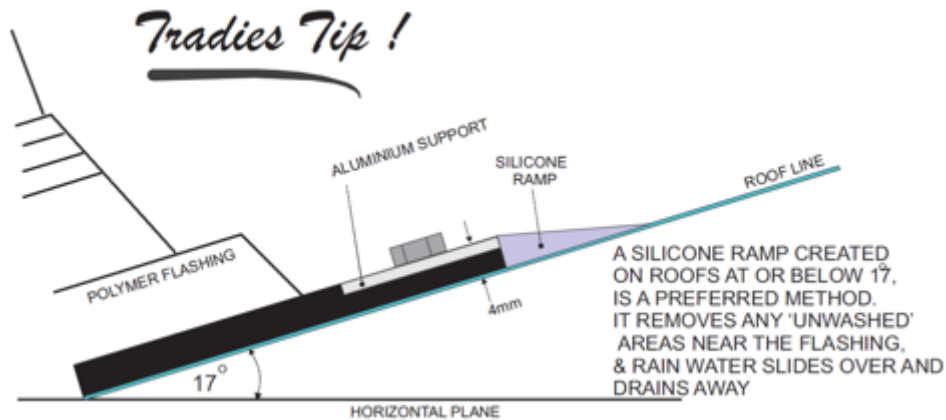
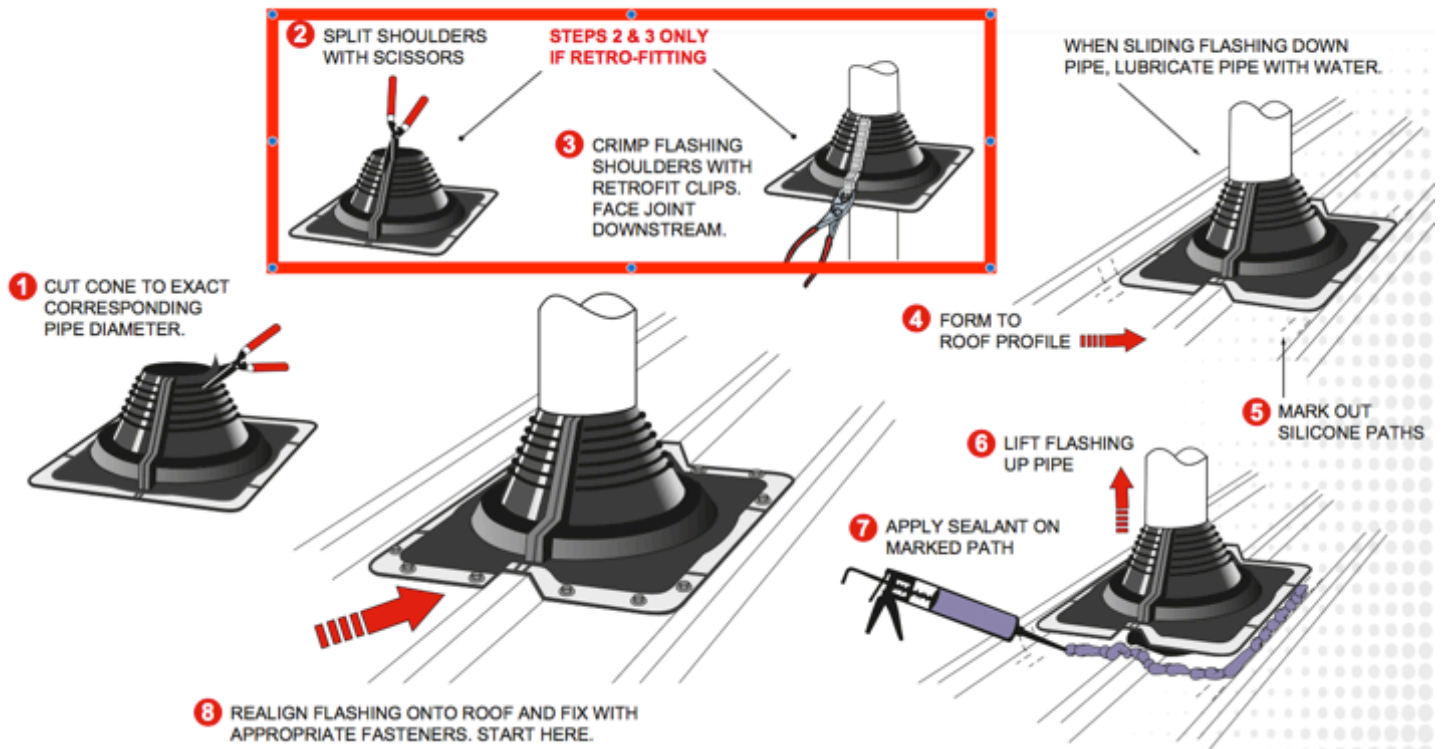
Installation Overview



Tradies Tip!



Installation Overview



BEAM TO ROOFEXTENDA® BRACKET BOLT SELECTION

Follow 1.Solaris Patio Engineering Design Guide

BOLT SIZE TABLE						
Post Material	Grade	Maximum Uplift on Post (kN)				
		Min. Thickness (mm)	1-M12/4.6	2-M12/4.6	2-M16/4.6	2-M20/4.6
Timber	JD4/J3	45	7.8	15.6	20.9	-
Steel (Hollow Section)	G350	2	14.0	28.0	38.0	48.0
Cold-Formed Steel (Typical)	G450	0.6	3.9	7.8	9.3	11.7
Cold-Formed Steel (Firmlok)	G550	1	7.8	15.6	20.7	21.6
		2	15.5	31.0	42.0	52.0